

### 7.1.2

## **The Institution has facilities for alternate sources of energy and energy conservation measures**

### **INDEX**

<b>Sr. No.</b>	<b>Details of Evidence</b>
1	Geotagged photographs of alternate source of energy and energy conservation measures.

## **Geotagged photographs of alternate source of energy and energy conservation measures.**

### **(a) Solar energy:**

Solar panels have been installed over the Engineering Block Buildings for catering lighting load of the building.

The details of the capacity of the installed solar panels:-

<b>S. No.</b>	<b>Particulars</b>	<b>Capacity/Number</b>
1	Solar Energy	100 kW

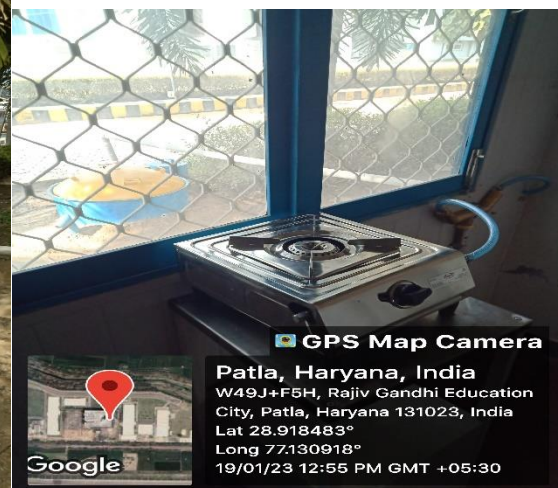
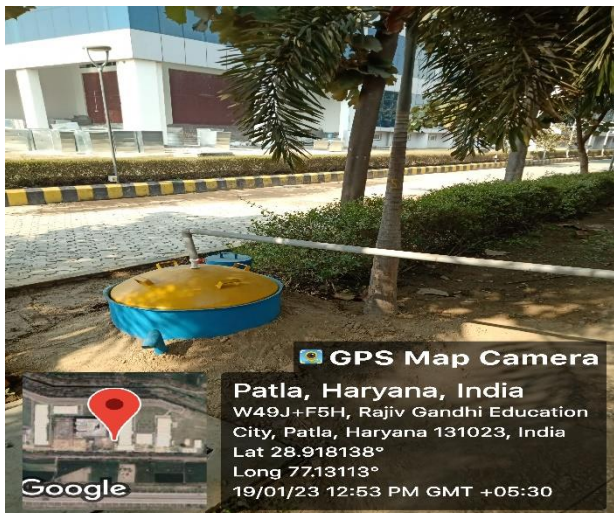
### **(b) Biogas Plants:**

Bio Gas Plants have been installed in the campuses for disposal of organic waste from mess and canteen. Waste food per day is processed in these plants. It produces an output of gas daily, which is used in the kitchen of the Hotel Management. A daily record of food waste fed into the plant and gas produced /used is separately maintained.

Bio Gas Plants have been installed in the campus IHM block for disposal of organic waste from mess and canteen. A daily record of food waste fed into the plant and gas produced /used is separately maintained

### **Capacity of Biogas plant:**

<b>Description of biogas</b>	<b>Capacity (cubic meter)</b>	<b>Bio gas Utilization</b>
FRP base Bio digester	5 or 14 KWh	IHM kitchen



### **(C) Sensor based energy conservation:**

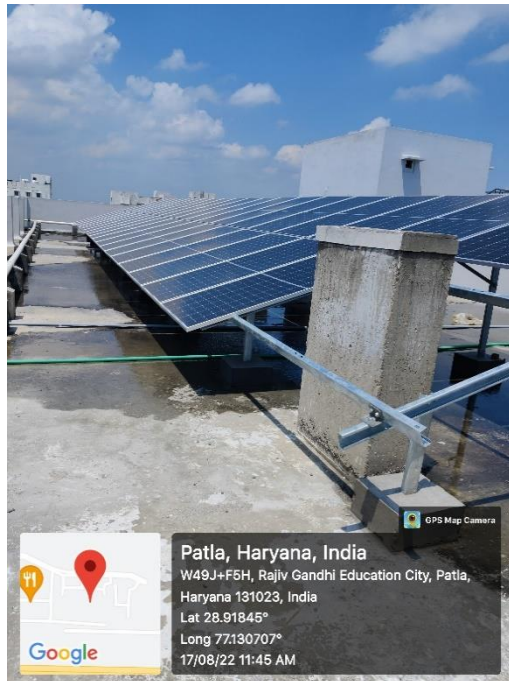
Lighting load are controlled by using sensor based switches which in turn save the energy consumption. Unnecessary usage of electricity are reduced by creating an awareness among faculty and staff members. Signage are installed at strategic locations.

### **(e) Use of LED bulbs/ power efficient equipment:**

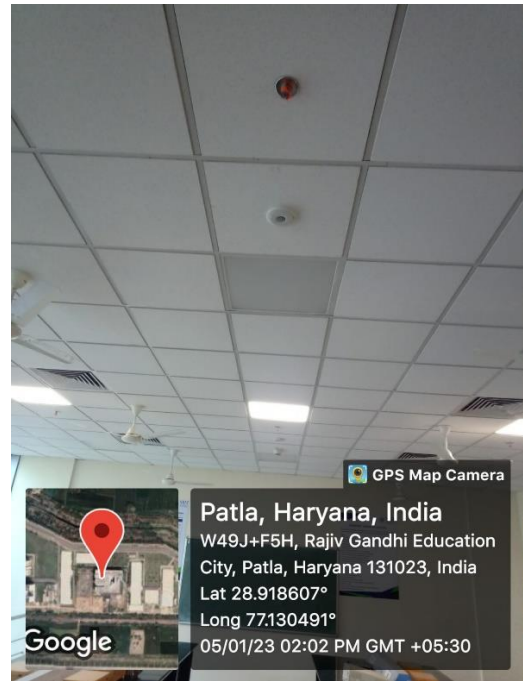
In order to enhance the energy efficiency across the campus, LED bulbs are installed across various places. Conventional lights have been replaced by LED Lights as



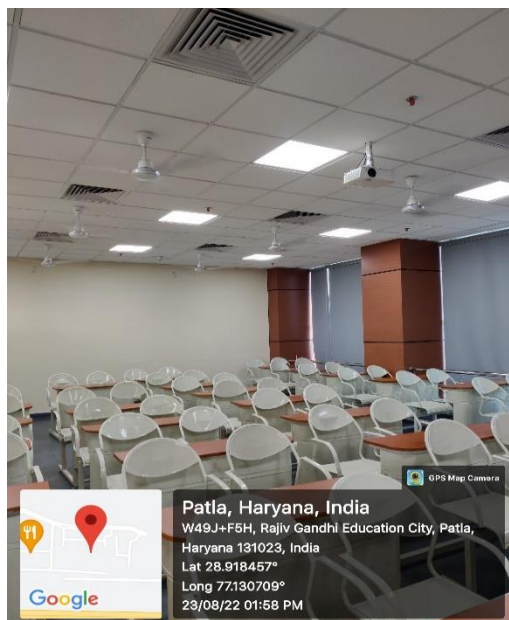
Energy Saving Measures. Conventional tube lights have been replaced by LED based Street Lights across the campus. Geotagged photographs are enclosed.



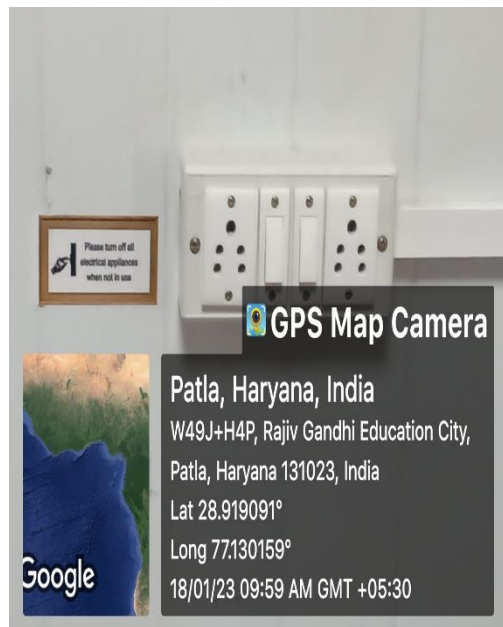
**SOLAR PANELS INSTALLED**



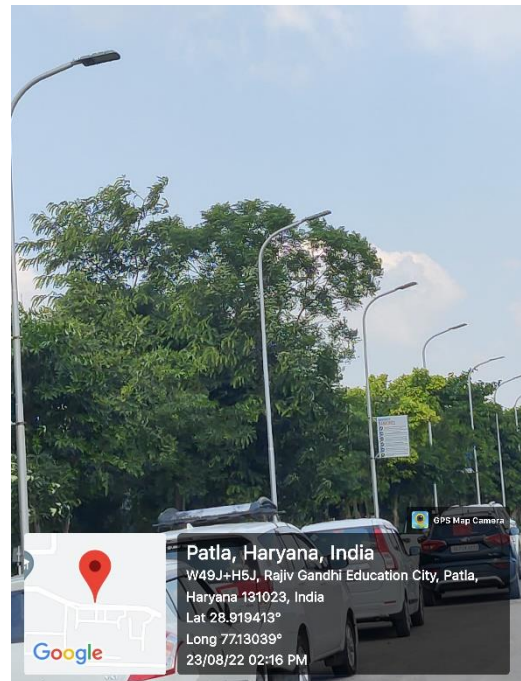
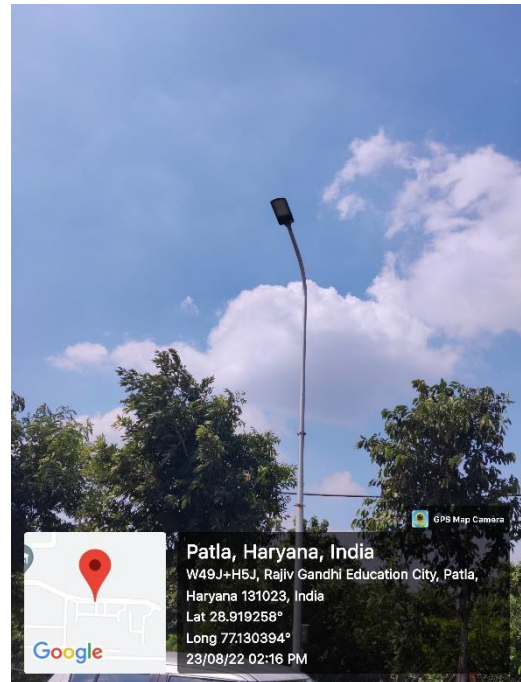
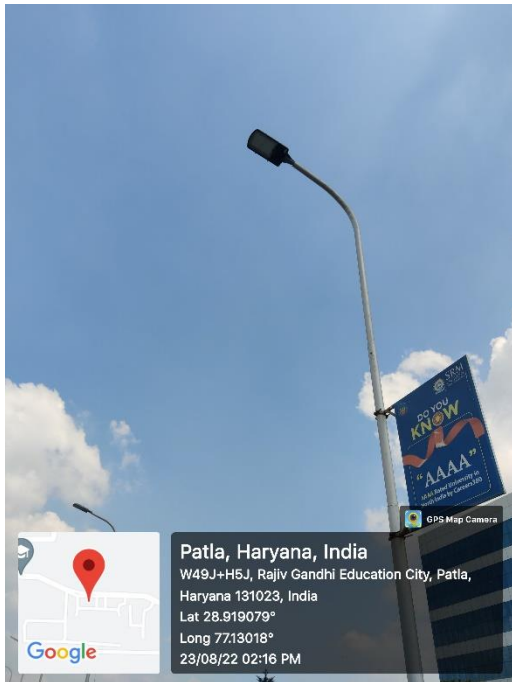
**ENERGY CONSERVATION USING  
SENSOR BASED SWITCH**



**(A) LABORATORIES AND LECTURE HALLS WITH LED LIGHTS**

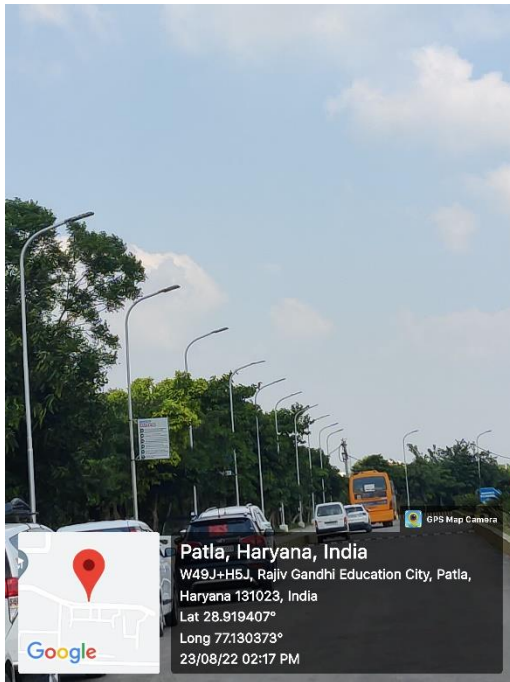


**(B) INSTRUCTION FOR ENERGY CONSERVATION**



LED BASED STREET LIGHT INSIDE THE CAMPUS





LED BASED STREET LIGHT INSIDE THE CAMPUS